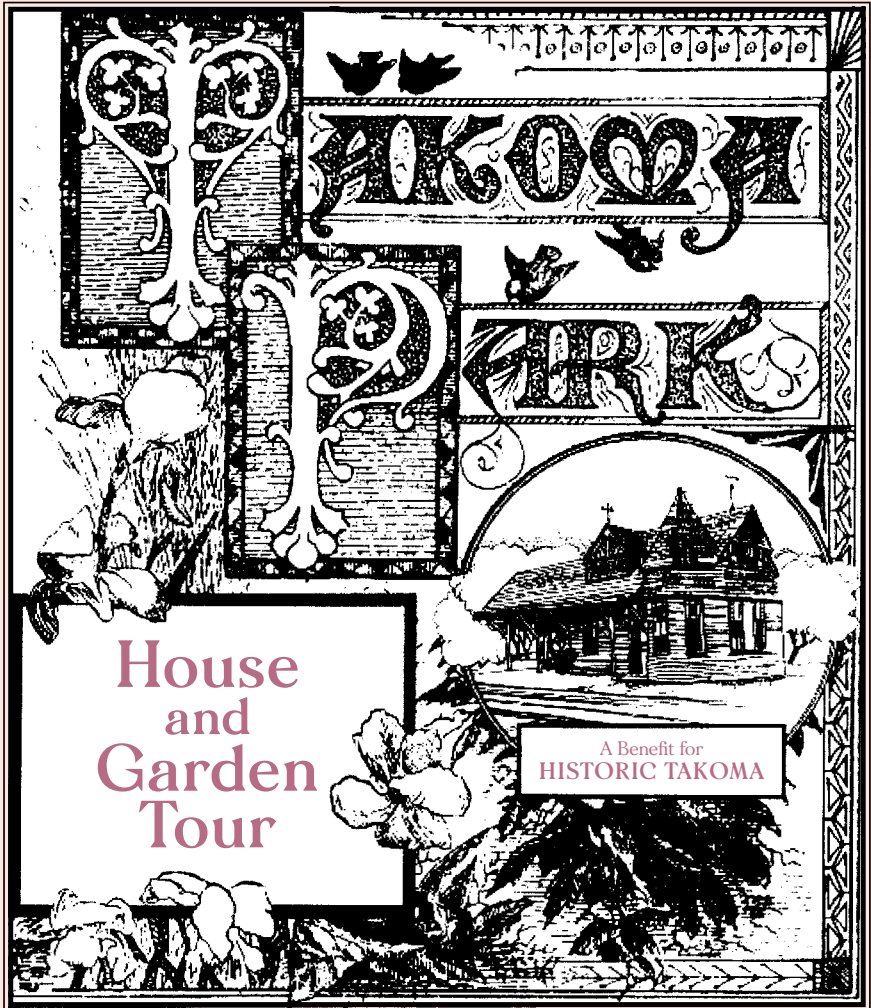


Mr. Edison's ◆ HOUSES ◆



House
and
Garden
Tour

A Benefit for
HISTORIC TAKOMA

Sunday, May 6, 2018 • 1–5 pm

Historic Takoma, Inc.

7328 Carroll Ave. • Takoma Park, MD 20912

historictakoma.org



45th ANNUAL
Takoma Park House
and Garden Tour

Mr. Edison's ◆ HOUSES ◆

THIS YEAR'S TOUR SHOWCASES GREAT ARCHITECTURAL variety, with homes located on land once owned by Civil War Union General Samuel Sprigg Carroll. The Tour centerpieces are three of six concrete houses on Sherman Avenue, celebrated in our 2007 Tour as Edison houses. Today we explore them in more detail.

Thomas Alva Edison was a man with many missions! His intellectual challenge with concrete housing began in 1906 when he declared "I am going to live to see the day when a working man's house can be built in a day." Concrete was thought ideal; it resisted fire, insects, rot, storms, cleaned easily, and adapted quickly to mass-production. In the early 20th century, mass-production was king.

Edison's interesting technique, for which he received a patent in 1917, was to cast an entire building at once with molds from cellar to roof



Edison popularized his technique with a fancy design later simplified.

In Loving Memory of

Ellen Rudolph Marsh

October 21, 1930 - March 26, 2018

- Founder of the Takoma Park House and Garden Tour in 1973
- Initiator of the Takoma Park National Register District in 1976
- Founder of Historic Takoma in 1979
- Co-author of *Takoma Park: Portrait of a Victorian Suburb* in 1984
- Recipient of *The 2014 Montgomery County Award for Historic Preservation: Lifetime Achievement in Local Preservation* from Montgomery Preservation, Inc.



We thank you, Ellen, for your tremendous activism in preserving our historic community over its worst decades of development, and we hope to always follow in your footsteps. —HISTORIC TAKOMA, INC.



Edison house casting showing single pour in process on rooftop.

with a single pour of concrete from the top of the structure (page 2). Rigorous experimentation led to the perfect concrete mix. After casting, six days were required to cure. Edison's initial designs were very fancy (page 1), later drastically simplified to reduce cost (page 20).

Another monolithic concrete building technique, "tilt up," was available in the early 1920s and could possibly have been used on Sherman Avenue. This involved the horizontal casting of the walls, which after drying were hoisted upright with screw-jacks and gasoline engines, and then tied together with poured corners.

However, the compelling physical evidence of visible metal roof framing on our six houses and an aerial photo showing possible remnants of a center pour hole on their roof centers (page 20) seemingly consistent with the Edison patent are not yet explained by the "tilt up" technique. Also, the six houses share some stylistic similarities with streamlined Prairie style Edison house designs (page 20). For now, we continue to refer to the Sherman Avenue houses as "Edison houses" as we research this further. Regardless of which technique was used, Edison can well be considered the Father of Concrete Housing for his important technical contributions.

Enjoy refreshments at Opal A. Daniels Memorial Park. A longtime resident of Sherman Avenue, Opal worked tirelessly to create this public park. Her daughter, Kay Daniels-Cohen, a beloved city council member, carried on her mother's activism. —**HISTORIC TAKOMA**



Custom cabinetry
for every room in
your home

CROWNPOINT
CABINETS

Work with one
of our in-house
design professionals

Handcrafted in New Hampshire
800-999-4994

Available direct, nationwide
www.crown-point.com



①

15 Sherman Ave.

BUILT C. 1923

First and second floors, lower level

➡ *Exit lower level*

THIS EDISON HOUSE welcomes you with a lovely front porch and stately original paneled door.

Ann and Merrill first saw the house in 1979. “It was a wreck,” says Ann, “but we immediately loved its exceptional qualities, the 10-foot ceilings, exposed beams, and oversized original casement windows.” Over the next few years they replaced wiring and plumbing, added a second bathroom and laundry, expanded the master bedroom, and remodeled two lower level bedrooms for their sons.

In 2017, Ann designed a stunning kitchen renovation with **Counter Culture**, featuring maple cabinets, green soapstone counters and Mexican tiles. The contrasting hand-crafted black

walnut counter and wall shelving, with artistically arranged displays, beautifully connect kitchen and dining room spaces. Enjoy the great variety of lovely original windows throughout the house.

Ann and Merrill enjoy collecting interesting and colorful art, much of it from local artists. Notice the “old man” tree sculpture in the living room. On the walls are covers of books published by Merrill’s Dryad Press, a literary press which he founded in 1975 (visit his office downstairs). Merrill is the current Poet Laureate of Takoma Park. In 2007, he and Ann initiated the Spring for Poetry in Takoma Park, which displays colorful poetry posters around the city, a project supported by Friends of the Takoma Park MD Library. ❖

www.COUNTER-CULTURE.com

COUNTER-CULTURE.com
11339 Georgia Ave.
Silver Spring, MD 20902
(240) 821-5257
quotes@ksihome.com

②

17 Sherman Ave.

BUILT C. 1923

First floor, lower level, and garden

➡ *Exit lower level*



THIS EDISON HOUSE STILL retains its original Florentine design element above a handsome paneled front door. A side addition was added sometime in the past.

Owners Judy and Bill lived for many years in New Orleans and experienced the ravages of Hurricane Katrina in 2005. They bought this house in 2008 because it connected them to the beloved historic home they sadly left when moving here. The stately and graceful proportions of this house, with its high ceilings, exposed coffered beams, and original paneled front door, provided comfort. Warm colors and art inside the house evoke the spice of New Orleans and its wonderful memories. A stained-glass window from their

former home hangs in the living room. The colorful painted window with its coffee cup design on display was originally a pane window in a house destroyed by Katrina.

A beautiful kitchen with deep green granite counters, warm cherry cabinets and a Viking stove is the heart of the home for this cooking family! The owners converted the back porch into a cozy study with lovely reclaimed pine floors.

The lower level notably contains a music room, a favorite cozy nook. Notice the charming stencils on the staircase, the bead board walls, and slate floor.

The garden delights Judy because something is always in bloom. ❖

Specializing in Kit Houses and Other Historic Homes

Catarina Banner (202) 487-7177

Marcie Sandalow (301) 758-4894

DC HOUSE SMARTS BANNIER & SANDALOW

COMPASS

DCHouseSmarts.com

5471 Wisconsin Ave., Chevy Chase MD 20815
(301) 298-1001 | compass.com



3

21 Sherman Ave.
BUILT C. 1923

*First floor, lower level,
garden*

➡ *Exit rear; lower level
entry from patio.*

THIS EDISON HOUSE IS located on a wide corner lot with beautiful views of nature and Opal Daniels Park. It is distinguished from the other Edison houses by a dramatic two-story side addition with casement windows built by previous owners. Enter through an enclosed front portico built by the current residents.

Visitors are welcomed by a paneled artwork depicting the face of the Buddha. Displayed on a renovated mantelpiece, it is a beautiful focal point. Eastern influences are evident in this peaceful home. The plentiful windows of the side addition provide light and views of nature.

The current homeowners moved from their native Burma in 2000.

They were delighted to discover the unique and welcoming Sherman Avenue community. "We never thought we would find a village in America like we were used to in Burma, but our new neighborhood is like a village."

Exit from the lovely kitchen renovated by Katie and descend to the patio from a deck and stairway built by neighbor Alphonse Fair (House #4). **J&G Landscape Design** created the large outdoor patio living space with its plantings and natural stone seating area. The garden was transformed by Katie's husband, a place where he feels connected to the earth.

From the patio area, access the lower level family room and exercise space. ❖

J&G LANDSCAPE DESIGN, INC.
FULL SERVICE DESIGN + BUILD

Landscape Planning & Design / Outdoor Living / Planting
Patios & Walkways / Walls & Steps / Drainage Correction
Grilling Areas / Pools & Water Features / Lighting

*Angie's List Super Service Award * Top Rated by Washington Checkbook*

301.476.7600 / www.jglandscape.com

4

7500 Hancock Ave.
BUILT IN 2006

*First and second floors,
garden*

➡ *Exit rear*



THIS NEW CRAFTSMAN HOME is in perfect scale and harmony with its partner, an attached 1919 white stucco house. Built by skilled carpenter and homeowner Alphonse Fair with the extraordinary design of architect **Paul Treseder**, this "stand-alone" Craftsman addition demonstrates a mastery of proportions, materials, space and light.

Entering the spacious foyer, the rich authenticity of imported Italian terra cotta floor tiles in a diagonal pattern greets the eye. These continue into the kitchen providing a unifying visual effect. The large, lovely kitchen contains white oak cabinetry, specially crafted by Alphonse's close friend. The wood flooring throughout the house consists of wide white oak boards. The woodwork trim is custom made of solid poplar.

High ceilings throughout give the home a special elegance. In the living room, Alphonse designed the corner fireplace with Mexican tiles. An elegant niche provides transition between living and dining rooms. The unique and historic octagon shape of the dining room ceiling is a favorite form used by Paul Treseder.

Upstairs, a luxuriously wide hallway has a bank of light-filled windows that overlook the copper porch connecting to the old house. Transom-topped doors maximize the natural light into the three bedrooms. The bathrooms feature Chinese marble or travertine tile, cut and installed by Alphonse.

Exit to the garden, where **J&G Landscape Design** (ad page 6) renovated the outdoor living space with grading, a lovely patio, a sturdy natural stone stepper path and new planting beds. ❖

Paul Treseder
Architect AIA

6320 Wiscasset Road
Bethesda, MD 20816
301-320-1580 • Fax- 301-320-1581
Paul.Treseder@verizon.net



5

7504 Hancock Ave.
BUILT C. 1953

First and second floors, garden

➡ *Exit rear*

DIANA AND LARS MOVED INTO a tiny center hall brick colonial in 2001. Finally confronted with moving or expanding their home in a much-loved neighborhood, they opted to stay and hired master **architect Paul Treseder** in 2014, who doubled their living space.

The new front porch is welcoming. Interior rooms and archways in the original portion of the home are integrated gracefully with new spaces designed with attention to detail, a Treseder hallmark. The interesting asymmetrical addition opens the house with light and outdoor views, bringing nature inside. Room flow is comfortable, with many cozy nooks and sitting areas adding visual interest and enjoyment. The dining room

area, now filled with natural light, was enlarged by enclosing an existing side porch. A new rear screened porch near a generous family room is appreciated.

An unusually wide galley kitchen featuring beautiful white cabinetry designed by **Montgomery Kitchen and Bath** is the heart of the home. A breakfast area located at one end has windows looking onto the garden.

Upstairs, walk through bright anterior space, into the new master bedroom gloriously wrapped in windows with a balcony over the back garden. Bath and closet space is beautifully integrated. In their daughter's room, enjoy the unique raised bed complete with office space beneath that she and Lars planned and built together. ❖

Montgomery Kitchen and Bath



15906 Luanne Drive
Gaithersburg, MD 20877

301.417.6661
contact@mkitchen.com
mkitchen.com

Buy with confidence.
Plant with passion.

The Behnke
NURSERIES CO.
Since 1930

11300 Baltimore Ave., Beltsville, MD
(301) 937-1100
www.Behnkes.com • behnkes@behnkes.net

f t
p i

**BEAUTIFUL TREES
MAKE A HOUSE
A HOME.**

BARTLETT
TREE EXPERTS
FOR THE LIFE OF YOUR TREES.

Call us at 301-881-8550 or visit BARTLETT.COM f t
Chris Larkin - Arborist Representative

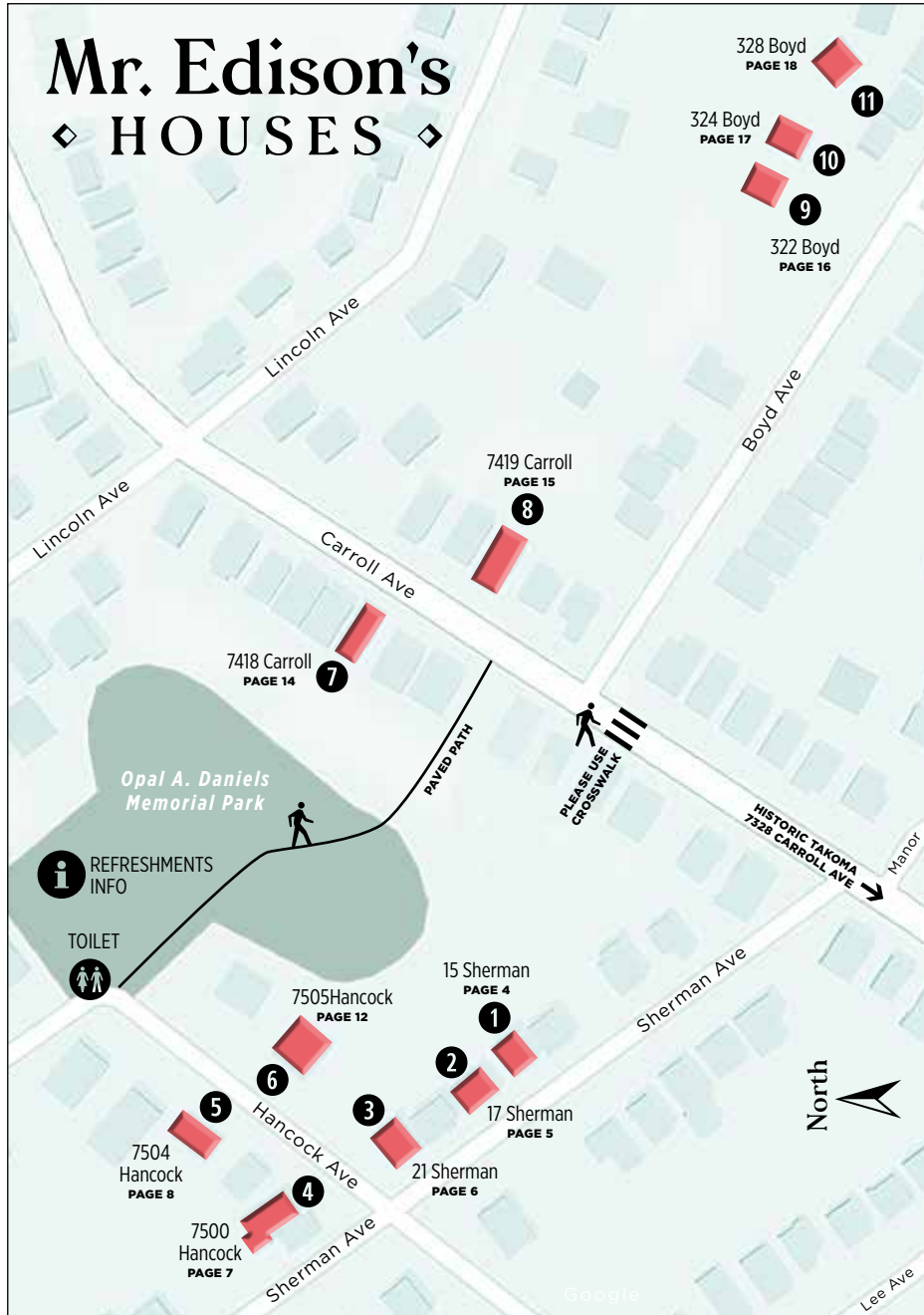
**Hardscape
Stonework
Landscaping**

TG Tillerman
gardens

Stone & Landscaping

Jesse Karpas
301.270.6860
Jessek@tillermangardens.com

45th ANNUAL
Takoma Park House and Garden Tour



Braitman Design Studio

Working at the Intersection of Art, Architecture & Design
 Located In Historic Takoma Park Since 2004

www.BraitmanDesign.com ■ 301-891-3800

braitmandesign
BUILD

GO Brent

Free consultations.
 Complimentary staging.

Liz Brent
 liz@gobrent.co
 O 301.565.2523
 C 202.321.2651
 www.gobrent.co

Proven. Ready.

6

7505 Hancock Ave.
BUILT C. 1951

First floor
➡ *Exit front*



THIS MID-CENTURY MODERN house features classic hallmarks of the style including striking stonework and original casement and glass block windows. Once a boarding house, Hannah and Felipe bought their home in 2010 and found all the doors were different; Hannah remade them to match the single remaining original door.

In 2015–16, **architect Paul Treseder** opened and expanded the living space with a rear addition that feels integral to the original house, filled with light and beautiful park views. A tray ceiling in the new living room gives additional height without breaking continuity with the original house. **Doug Berry of Berry Construction** flawlessly

meshed old and new, also adding a rear porch and modifying the kitchen.

The clean modern spaces showcase the couple's eclectic collections of antique American furniture and West African art. A talented artist, several of Hannah's own paintings are also on display. The 19th and early 20th Century furniture includes press back chairs (no two alike) and a pier table made by Hannah's great, great grandfather.

A red partition, open at the top, cleverly provides a decorative back drop for antique furnishings and screens the kitchen work area. Black and burgundy tile window sills in the older areas are original.

A paved trail in Opal Daniels Park leads to Carroll Avenue and more tour houses. ❖

**BERRY
CONSTRUCTION
COMPANY, LLC**

301.370.5626
berryconstructionllc.com



Heritage Building and Renovation, Inc.

Specializing in the complexities of older homes

*Fine Craftsmanship
Attention to Detail
Timely Completion*

MHIC Lic. #32422

Design/Build • Historic Renovation • Additions
Kitchens and Bathrooms • Family Rooms
Built in Cabinetry • Porches and Decks • Structural Repairs

301-270-4799 HeritageBR.com



Bruce Werber

Real Estate Professional Specializing in
Takoma Park & Silver Spring

There is a Difference!

301-908-2046
(O) 240-497-1700

www.TakomaHomes.com
Bruce@TakomaHomes.com





Renovating?

(or building new?)
make your home
AGE-LESS

www.UDConsultants.com



7

7418 Carroll Ave.
BUILT C. 1923

*First and second floors,
garden*

👉 *Exit rear*

THIS SWEET CRAFTSMAN bungalow has architectural features not commonly encountered that lend it special charm. Outside roof rafters are decoratively carved. The front porch has shingled columns. A welcoming three-window row with an oversized center sash topped by an exquisite stationary pane evokes the grace of an earlier Victorian period. Inside, one is struck by the unusual variety of original window styles, which flood the home with light on all sides.

Emily and Gustavo are brand new Takoma Park residents, securing their perfect home in 2017 through the diligence of realtor **Rhonda Mortensen of Long and Foster Real Estate**. They love the community and the

ability to walk almost everywhere while still so close to nature. From the back windows, views to Opal Daniels Park remind Emily and Gustavo of the woodlands of their childhoods, she in New York State and he in Oaxaca, Mexico. Much of their art work is Mexican, including the painting of Our Lady of Guadalupe, a wedding gift from Gustavo's mother.

The staircase leads up to three beautifully appointed bedrooms with original heart pine floors. In the master bedroom hangs a mirror from Mexico, framed in pressed tin.

Previous owners renovated the kitchen, opening it to the dining area, and added the back deck with steps leading to the garden overlooking the park. ❖



8

7419 Carroll Ave.
BUILT C. 1920

*First and second floors,
garden*

👉 *Exit rear*

IN 1986, BRIAN AND ROULA MOVED into this house and began planning its facelift. Much of the bungalow character was intact, some covered. They stripped much of the painted wood to discover chestnut trim. They removed the dropped acoustical ceiling in the kitchen but unfortunately could not restore it due to water damage. Instead they created a wood barrel vault to add height and visual interest. They stripped the exterior asbestos siding and restored the original wood beneath.

Other changes took advantage of the original large windows, and high ceilings of the bungalow. To bring in more natural light throughout the first floor, they demolished the wall

between the dining room and kitchen and added an addition to the back, bringing southeastern light through the French doors and breakfast nook windows. The master bedroom was enlarged, adding more windows and a cathedral ceiling.

Brian did much of the physical work himself with the help of friends and family. The lovely Craftsman bungalow you see today showcases Brian's respect for original construction and artful integration of old and new, concepts that also define **Bennett Frank McCarthy Architects**, the firm he co-founded in 1989. Two of their projects, located on Boyd Avenue, are on the Tour today.

Exit from rear and see the koi pond Brian built with his son Orion. ❖

**RHONDA MORTENSEN TEAM
OF LONG & FOSTER**

Experts in real estate

(301) 326-6401
www.helpmerhondarealestate.com



Find out your home's value fast & free at dmvhomeworth.com.

BENNETT FRANK MCCARTHY
architects, inc.

(301) 585-2222 • www.bfmarch.com • (301) 585-8917 fax






9

322 Boyd Ave.
BUILT C. 1951

First and second floors
➡ *Exit rear*

THIS MODERN YELLOW STUCCO home with its inviting canopy entryway began life as a rock solid, red brick, center hall colonial. Desiring more space, light and integration with the outside, Christine and her husband, Sam Behrends, transformed it in 2006-07 with **architect Scott Willets** — then with **Bennett Frank McCarthy Architects**. Old house and new addition were cleverly unified through a crisp stucco exterior and without major incongruities in scale. **Dave Hoskins of The Right Angle** skillfully led the construction, delivered on time and on budget.

The current entry foyer was the original dining room, and the former kitchen occupied just the passage way of the current kitchen! The new

addition adds space and height with ceiling insets and a “step-down” into now larger dining and living areas. The poured concrete floor, windows and a signature chandelier add distinctive modern features. A lovely, spacious kitchen has glass-fronted cabinets with stainless steel pulls, marble counters, wood floors and a home office. A gorgeous picture window overlooks a park-like backyard. The 1950’s stainless steel stove backsplash was salvaged from the original kitchen. Upstairs, the master bedroom features a unique ceiling design, picture windows invoking a treehouse feeling, and a small balcony.

French doors on the main floor invite you to the rear patio, where you exit to the left. ❖

10

324 Boyd Ave.
BUILT IN 2005

First and second floors,
lower level, garden
➡ *Exit lower level*



THIS NEW CRAFTSMAN cottage was commissioned by Sheila and Peter Blake (House #11) to maintain the character of a beloved neighborhood. Fearing what might replace the former house that could not be saved, they purchased the property in 2003 and hired **architect Brian McCarthy of Bennett Frank McCarthy Architects** (ad page 15) to create a home appropriate to the site. Shannon and Jay were delighted to find the cottage and bought it while it was still under construction.

Proudly built with quality by **Kingston Design Remodeling**, this modern interpretation of Craftsman design has modest exterior massing that belies the spacious interior.

Soaring, angular ceilings and exposed beams create a feeling of spaciousness. Light-filled entryways in the front lead to a “social kitchen,” open to the rest of the living area. Kitchen cabinets are light-hued wood, and blend well with the soft earthy colors throughout the home. The second floor is dedicated to the master bedroom. The finished lower level displays a family room and bedroom.

Shannon and Jay love the deep setback from the street and sense of being in nature. While the house was under construction, they added a rear deck from the living room to enjoy their wooded views. The front terrace is a favorite spot for family meals, and the steep driveway is great for sledding. ❖



THE RIGHT ANGLE

RENOVATIONS & ADDITIONS

David Hoskins
The Right Angle, LLC
10026 Clue Drive | Bethesda, MD 20817
Office (301) 564-1915 | Cell (301) 602-7174
rightangle@verizon.net



DESIGN KINGSTON REMODELING

Unlock Your Home's Potential!

complete Design and Build Services

additions - whole house - historical restoration - kitchens - baths - basements
www.kingstonbuilders.com 703.323.6527 info@kingstonbuilders.com
Celebrating our 37th year serving the DC metro area



11

328 Boyd Ave.
BUILT C. 1923

*First and second floors,
studio, garden*

➡ *Exit front*

PETER SAYS SHEILA JUMPED for joy when she first glimpsed this quaint Craftsman cottage. Once divided into three apartments and restored by the previous owner, it is now a perfect space for artistic inspiration with its sun-filled kitchen (a converted porch), cozy rooms and charming features such as built-in glass-fronted wall cabinets. Since purchasing the house in 1999, the couple have added a screened sleeping porch. Spaces are filled with art and loved objects that all fit beautifully together. The dining table was designed and built by their son.

Sheila's own art hangs throughout the house, including several paintings from her series of neighborhood houses. These, she says, "fuse what

is personal and deeply felt with the abstract ideas that challenge me." As an accomplished artist, Sheila's efforts to foster art appreciation include her cohosting of "Art as Experience" every other Saturday on Takoma Radio, WOWD-LP, 94.3FM, a project of Historic Takoma.

The upstairs rooms with their interesting angles are flooded with light and beautiful views. Notice the unusually wide original pine floor boards.

Visit with house guest **Community Forklift** to learn about their inventory of antique, artistic objects. Then walk down to the back garden, across a suspended walkway, to visit Sheila's distinctive copper studio where she works every day. A sculpture collection is placed throughout the garden. ❖



COMMUNITY FORKLIFT
CommunityForklift.org / 301-985-5180

VINTAGE and MODERN
building materials, appliances,
lumber, furnishings, & more

DONATE or SHOP
Create green jobs & help neighbors
in need. Schedule a pickup today!





MOMI's tenants at
ELEVATION 314
and **ELM GARDENS**
celebrate HISTORIC TAKOMA'S
2018 Takoma Park
House and Garden Tour!

Elevation 314, 314 Carroll Ave NW
Elm Gardens, 7050 Eastern Ave NW • Washington, DC
MOMI • 301-622-7980 • momi@momidc.com


MOMI
Environmentally and socially
conscious properties

Montgomery Oaks Management
Inc. continually strives to make our
properties healthy, beautiful and
comfortable; and to provide the
occupants with a level of service
that is personal and exceptional.




**Access-Ability
Consultants**

Special Thanks from
Historic Takoma for Your Support



**Thanks to Historic Takoma for the
House and Garden Tour that's a great asset to the community.**




David Maplesden
REALTOR

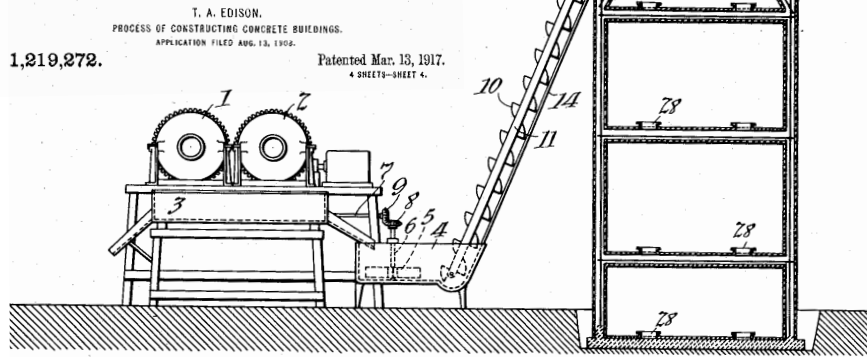
The Maplesden Group
David Maplesden & Elliot Barber

EMAIL: INFO@MAPLESDENGROUP.COM
WEB: WWW.MAPLESDENGROUP.COM

OFFICE: 301-270-7026
CELL: 202-270-7253



Mr. Edison's ◆ HOUSES ◆



Edison patent illustrating the single pour technique.



Aerial photo of the six Sherman Avenue concrete houses, showing possible remnants of pour holes on roof centers.



Prairie style housing c.1917 built with Edison technique at Cement City in Donora, PA.
Photo: Donora Historical Society.

Historic Takoma thanks all of the homeowners who so graciously opened their homes and gardens for the 2018 Takoma Park House and Garden Tour.

We also thank the following for their donated time and services:

HTI Tour Committee (Lorraine Pearsall, Chair; Marty Ittner; Diana Kohn; Art McMurdie; Pierre Perrolle; Elizabeth Thornhill) Ace Hardware, Sligo Creek Tile Co., TableTop, Takoma Park Silver Spring Co-Op, Our 50 Tour Docents.

PHOTOGRAPHY: Art McMurdie
PROGRAM DESIGN: Marty Ittner
PRINTING: DigiPrint Connection
AWARDS: Sligo Creek Tile Co.

Historic Takoma wishes to thank the following community-friendly institutions, businesses and individuals for their support of the 2018 Takoma Park House and Garden Tour:

SPONSORS

Access-Ability Consultants • Allied Window, Inc. • Braitman Design Studio • Liz Brent of Go Brent Team • City of Takoma Park • Crown Point Cabinetry • Judy Kogod of Long & Foster Real Estate • Art and Ellen McMurdie • Takoma Park Silver Spring Co-op • Tenants of Montgomery Oaks Management

DONORS

Catarina Bannier and Marcie Sandalow of Compass • Counter-Culture • Bartlett Tree Experts • The Behnke Nurseries Co. • Berry Construction • Community Forklift • Heritage Building and Renovation, Inc. • Kingston Design Remodeling • J&G Landscape Design • David Maplesden of Long & Foster Real Estate • Montgomery Kitchen and Bath • Rhonda Mortensen of Long and Foster Real Estate • Lorraine Pearsall and Paul Chrostowski • The Right Angle • Sligo Creek Tile Co. • Elizabeth Thornhill • Tillerman Gardens • Paul Treseder, AIA • Universal Designers and Consultants • Bruce Werber of Long & Foster Real Estate

CONTRIBUTORS

Sara Hayden and Ray Martone • Loretta Neumann and Dan Smith • Faith Wheeler

ALL PROCEEDS FROM THE TOUR ARE REINVESTED IN OUR COMMUNITY.



HISTORIC TAKOMA

7328 Carroll Ave., Takoma Park, MD 20912

historictakoma.org

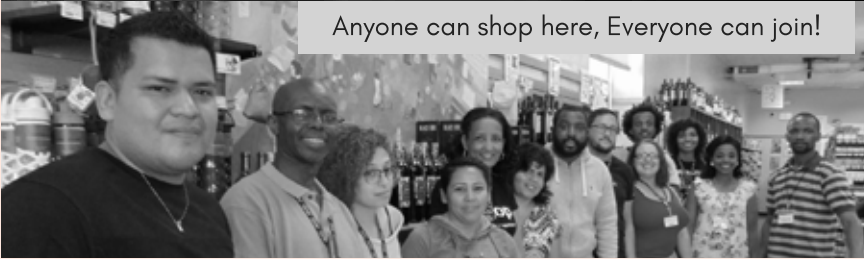


TPSS CO-OP

201 Ethan Allen Ave. Takoma Park MD 20912

Open 8am-10pm, 7 days a week

301-891-2667 www.tpss.coop



Anyone can shop here, Everyone can join!



ALLIED WINDOW, INC. *"Invisible" Storm Windows®*

ALLIED WINDOW HAS A STRONG COMMITMENT TO HIGH QUALITY CUSTOM STORM WINDOWS & THE CAPABILITY TO MEET THE NEEDS OF ANY HOME OR OTHER BUILDING WITH SINGLE GLASS

INTERIOR & EXTERIOR WINDOWS
CUSTOM COLORS, CUSTOM SCREENS & SPECIAL SHAPES
HISTORIC, RESIDENTIAL & COMMERCIAL BUILDINGS
ENERGY SAVINGS—APPROXIMATELY 50%
SOUND REDUCTION—UP TO 50%

11111 Canal Road, Cincinnati, Ohio 45241 www.alliedwindow.com/ohj • 800.445.5411 • fax: 513.559.1883

