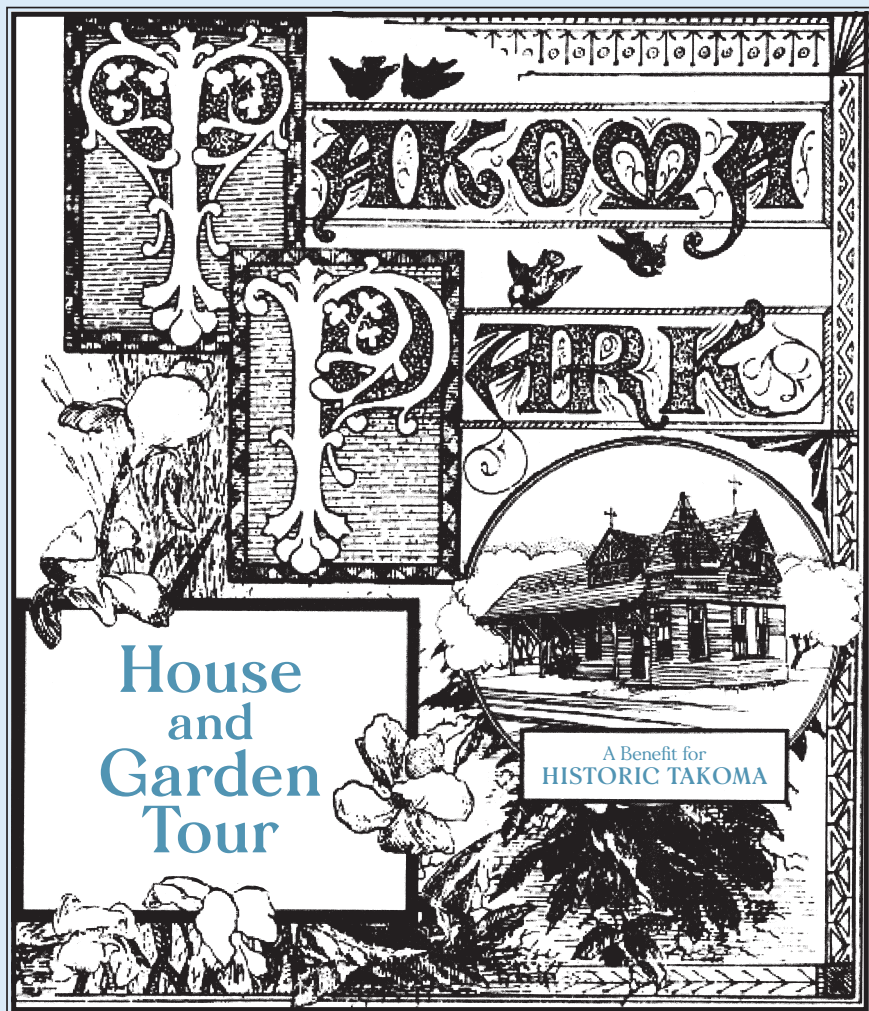


# Politics & Prayer



Sunday, May 5, 2019 • 1–5 pm

Historic Takoma, Inc.

7328 Carroll Ave. • Takoma Park, MD 20912

[historictakoma.org](http://historictakoma.org)

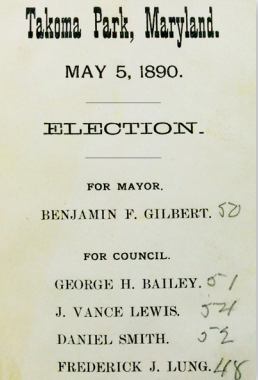


46th ANNUAL  
Takoma Park House  
and Garden Tour

# Politics & Prayer

WELCOME TO THE LITTLE-KNOWN STORY OF OUR FIRST election as an incorporated town on May 5, 1890, exactly 129 years ago today. On that day, our comfortable politics were turned upside down when local preacher Reverend Chauncey H. Remington audaciously challenged the most powerful man in town, founder Benjamin F. Gilbert, for the inaugural position of Mayor!

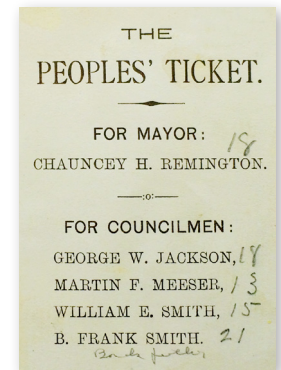
Not surprisingly, Gilbert's ticket, simply entitled "Takoma Park, Maryland" in bold letters befitting the man, won against Remington's "The Peoples' Ticket":



B.F. Gilbert's ticket

*"At a rather spirited election held on May 5th for the first honors of the Town, B.F. Gilbert was elected Mayor, the victorious ticket leading by a vote of 50 to 18. ... having run on a ticket advanced by the Improvement Association, against a so-called Peoples' Ticket (emphasis added), headed by the Rev. C.H. Remington."*

A direct challenge to B.F. Gilbert and his inner circle in our first election, held in the Union Chapel (page 2), is frankly unthinkable. A man of enormous influence and wealth in 1890, Gilbert was revered as the "Father of Takoma Park." Prior to this election, Gilbert and his inner circle essentially governed the town as the "Improvement Association," by virtue of their wealth and connections.




Remington's "Peoples' Ticket"

## House and Garden Tour

### » RULES «

Thank you for attending the Tour! We are all grateful to the homeowners who have opened their homes today for your enjoyment; without them, there would be no Tour. Docents are provided on each opened floor to guide and help you today. We ask that you observe the following instructions:

- **No interior photography is permitted.**
- Follow docent's instructions, direct all questions to them.
- Shoe coverings (booties) required where indicated with following icon: 
- No spike-heeled shoes allowed inside; shoe coverings (booties) are provided.
- No smoking, beverages or food allowed inside.
- Closed doors, drawers or cabinets means "no entry."
- Use handrails; always watch your footing.
- Home professionals may be present for ideas with your own projects, check with your docent.



Union Chapel where Remington preached and the 1890 election was held.

By 1890 Takoma Park was a wild success. Gilbert's 1883 gamble to promote abundant nature, clean air and water brought many settlers to the "wilderness" on the B&O Railroad. Town incorporation in April 1890 enabled its new government to raise money and recover costs previously assumed by Gilbert from its residents. Major infrastructure issues remained to be tackled.

History is silent on the reasons for the remarkable challenge to Gilbert and "the

ticket advanced by the Improvement Association." Today we compare two very different men to gain some understanding.

Born in Ohio, Remington was a career Baptist pastor in Iowa, Wisconsin and other western states from 1856 to 1884. In 1862, he was commissioned as a Civil War chaplain at the age of 35 for the 11<sup>th</sup> Iowa Infantry. His health suffered greatly during his service. Gilbert was born in upstate NY. In 1862 at the age of 21, he came to Washington seeking fortune; by about 1867 he had built several hundred houses. In 1883 he opened a real estate office at 9<sup>th</sup> and F Streets, and bought the 93 acres that began Takoma Park.

Remington came to Gilbert's Takoma Park in 1886 from Kansas at the age of 59. He and his wife Mary bought a lot on Holly Avenue for \$450 and built a simple house in 1887 (#11). Our first Sunday School was in the Remingtons' new home. When Union Chapel was built in 1889, Remington shared its interdenominational pulpit with visiting preachers. A man of the cloth, he was unlikely to be wealthy. Comparatively, Gilbert's mansion was built at a cost of over \$20,000 (#6B).

From 1892 council records, it is apparent Remington was concerned about taxes. In contrast, Gilbert's success by 1890 led to new subdivisions, town indebtedness, and taxes. After Gilbert ceased to run, Remington was elected by subsequent councils from 1894 to 1904 as the chairman of judges for both elections and a voter question on indebtedness for water, sewer and lighting.

The social and business spheres of the two men could not be more different. Remington's slate was comprised of early settlers not active in town politics. In contrast, Gilbert's slate had close business ties and were involved in politics/town affairs.

Regardless of his motivations, Remington had no problem questioning authority. And to that degree, we can say that today's spirit of "The Republic of Takoma Park" began in 1890 with "The Peoples' Ticket!

*-Historic Takoma*


Visit the **Thomas-Siegler Carriage House and Garden (#6A)**. Walk

around to the back to see the carriage house entrance serving the home of Amanda and Isaac Thomas, the first house built in 1884. An



Thomas Siegler Carriage House

attached early 20<sup>th</sup> Century garage was added by the Siegler family. Together, they tell the story of transportation from horse to automobile.




## ALLIED WINDOW, INC.

"Invisible" Storm Windows®

ALLIED WINDOW HAS A STRONG COMMITMENT TO HIGH QUALITY CUSTOM STORM WINDOWS & THE CAPABILITY TO MEET THE NEEDS OF ANY HOME OR OTHER BUILDING WITH SINGLE GLASS

INTERIOR & EXTERIOR WINDOWS  
CUSTOM COLORS, CUSTOM SCREENS & SPECIAL SHAPES  
HISTORIC, RESIDENTIAL & COMMERCIAL BUILDINGS  
ENERGY SAVINGS—APPROXIMATELY 50%  
SOUND REDUCTION—UP TO 50%

1111 Canal Road, Cincinnati, Ohio 45241 [www.alliedwindow.com/ohj](http://www.alliedwindow.com/ohj) • 800.445.5411 • fax: 513.559.1883





### 310 Tulip Ave.

BUILT 1923

#### Takoma Park Presbyterian Church Sanctuary Building

Refreshments and Restrooms in Gymnasium Building

Exit front



THE PRESBYTERIAN CHURCH is celebrating its 125<sup>th</sup> anniversary in Takoma Park this year. Upon its arrival in 1893, it began using the existing interdenominational Union Chapel where Remington had often been a guest preacher. The steepled wooden structure adjacent to the first house on Maple Avenue (Page 2) had been completed in 1889 with community subscriptions on land donated by Gilbert. By 1890 it had incurred much debt and faced worrisome years until acquired by the Presbytery of Washington City. The stone church building on the corner today was built in the popular Gothic Revival style with a stone-faced facade covering up the

old chapel. The chapel was torn down in 1949 and replaced with the education building.

In 1924, Leonard Boertlein, founder of the Washington Art Glass Studio of Capitol Heights, created and installed stained glass windows with muted tones of blues, pinks, and grays in rectangles, experimentally streaked with black carbon baked into the colored glass. Initially a temporary installation, the Church instead preserved and restored the windows in the 1990s, with the assistance of the son and grandson of the original fabricator—who still had the original glass in their studio!

The gymnasium is on the site of our first public school (Page 20). ♦

Refreshments provided by



TPSS Community Kitchen

Crossroads Community Food Network

Connecting and empowering people through healthy food

[www.crossroadscommunityfoodnetwork.org](http://www.crossroadscommunityfoodnetwork.org)



### 7135 Maple Ave.

BUILT c. 1921

First and second floors

Exit first floor rear



THE LOT WAS PURCHASED in 1921 by Benjamin C. Stine, a house carpenter. Takoma Park directories show that by 1922 the house was occupied by Benjamin C. and Mrs. Anna V. Stine.

It is believed to be a duplex kit house based upon interior details and its overall design. Research by kit house experts **Catarina Bannier and Marcie Sandalow of Compass** is presently on-going to determine the manufacturer. It is unusual in that the units are stacked completely on top of each other rather than placed side-to-side as often seen in Takoma Park. Clearly designed for two families, there is a separate front foyer and

staircase to the second floor, and a separate rear staircase (not accessible).

Hubert and Jessica purchased the house in 2012. This is its first time on the Tour. They enjoy its beautiful old character, two screened-in porches and closeness to Metro. Spacious rooms on both floors are light-filled by many large windows. Rustic Craftsman brown brick fireplaces are on both floors but with different designs, each flanked by windows true to style. Glass double doors enlarge the space. Kitchens on both floors are charmingly in period with farmhouse sinks, shelving, tiling, plate racks. Interesting side kitchen windows have an upper small stationary pane and large sash below. ♦

### Specializing in Kit Houses and Other Historic Homes



Catarina Bannier (202) 487-7177



Marcie Sandalow (301) 758-4894



BANNIER & SANDALOW

COMPASS

DCHouseSmarts.com

5471 Wisconsin Ave, Chevy Chase MD 20815 (301) 298-1001 | compass.com



### 7122 Maple Ave.

BUILT 1889-1898

First floor  
and garden

Exit front



**T**HIS LOVELY QUEEN ANNE style house served as the Takoma Park Presbyterian Church manse from 1898 until it was sold to a private owner after World War II. Prior to 1938, its original generous front porch was replaced by a small open portico with a concrete floor. Then in the 1980s, an attic fire claimed the characteristic Queen Anne front gable and its window. In 2011, Rachel and George located a 1938 photo of the original house with its architecture intact. The photo served as the historical basis for a major restoration of the house by **Heritage Building and Renovation** in 2011 (ad page 18).

The elaborate spiral design of the staircase newel post and balusters

is unusual. Rooms are spacious with ten-foot ceilings. Former parlors were at one time merged into a large living room. The dining room is graced by an elegant white buffet cabinet made by **Crown Point Cabinetry** (ad page 11), accented perfectly by a red wall.

A lovely new kitchen with gray cabinetry built by **DuraSupreme** was installed in 2015. **Designer Keith Spencer of Quality Kitchens and More** worked closely with the owners to overcome complexities of floor/ceiling heights and wall bump-outs. White open shelving is a breezy touch, and the farmhouse sink brings the room back in time. Rustic hand-made backsplash tiles are just the right shade of blue. ♦

## Quality Kitchens & More, Inc.

Distributors of Fine Cabinetry

Keith Spencer Design/Sales  
kspencer@kitchensbyquality.com  
240-375-8338 Beltsville, MD  
kitchensbyquality.com



PROUD DISTRIBUTOR OF



### 7206 Maple Ave.

BUILT c. 1922

First floor and garden

Exit rear



**T**HIS IS A BEAUTIFUL EXAMPLE of a classic American Craftsman House. Design hallmarks are all in evidence: large triangular roof brackets and exposed rafters under wide eaves, wood clapboard siding, a wide porch with brick piers and square columns supporting the porch roof.

The owners purchased their perfect home in 2016, and this is its first time on the Tour. Jennifer loves its original historic details, particularly a sweet arched ceiling in the vestibule leading to a large kitchen and charming old pantry.

Spacious rooms with tall ceilings have numerous multipaned windows providing light all day. The openness allows the beauty of interior

architectural lines to be noticed. The rustic red brick fireplace in the living room is flanked with windows and bookcases true to style. Warm, lovely wood floors emphasize natural beauty. Jennifer has artfully merged old and new using sleek modern furnishings with crisp lines and beautiful wood, connecting to the Craftsman ethic of celebrating nature.

The dining room chandelier is an artistic piece inspired by the owner's love of engineering (she owns a transportation engineering consulting firm). The design combines classic industrial materials including rebar, hammered metal and gear shafts. The result is an artful fixture filled with movement. ♦



# Bruce Werber

Real Estate Professional Specializing in  
Takoma Park & Silver Spring

*There is a Difference!*

**301-908-2046**  
(O) 240-497-1700

www.TakomaHomes.com  
Bruce@TakomaHomes.com



**7302 Maple Ave.**  
BUILT 1887

First and second floors

Exit front

Wear booties



**T**HIS QUEEN ANNE STYLE house was on the 2015 Tour. While much historic fabric remains, it had been insensitively modified in the 20<sup>th</sup> Century to accommodate five apartments. Extensive interior rehabilitation was completed in April with assistance from the Maryland Historical Trust Rehabilitation Tax Credit. **J Allen Smith Design/Build**, a master renovation firm, was brought on to implement the challenging work of retrofitting new spaces into an old house.

Most problematic was the kitchen in the basement. Now, a new first floor kitchen is located close to where it would have been in 1887. Enclosures for the south wall kitchen cabinets conceal an innovative structural solution

that supports a new second floor stairwell landing while preserving the existing open walkway to the living room. A rebuilt rear deck was screened in. Pine flooring reclaimed during kitchen installation was reinstalled to repair damaged floors on the first and second floors.

On the second floor, a new opening and stairwell landing now provides access to two rear bedrooms. The master bedroom has an updated bath, and a new walk-in closet was rebuilt from a sleeping porch space. A former sitting area is now a bedroom; early 20<sup>th</sup> Century trim was retained to show a former archway pattern on the west wall.

Faux-wood paneling in halls and stairwell from former apartment use was removed, and damaged underlying plaster walls repaired. ♦



**j·a·s**  
j·allen·smith  
DESIGN/BUILD

(301) 810-5247  
jasdesign-build.com

design/build - additions - kitchens - bathrooms

Hardscape  
Stonework  
Landscaping

**Tillerman  
gardens**

**Stone & Landscaping**

**Jesse Karpas**  
301.270.6860  
Jessek@tillermangardens.com

Typical architect ad concept =  
Picture of house + firm name

This ad isn't typical and neither is your home renovation. Call me to get started on your vision.

**BEN NORKIN**  
- ARCHITECTURE -

202.578.7094  
BenNorkinArchitecture.com

**BEAUTIFUL TREES  
MAKE A HOUSE  
A HOME.**

**BARTLETT  
TREE EXPERTS**  
SCIENTIFIC TREE CARE SINCE 1907  
FOR THE LIFE OF YOUR TREES.

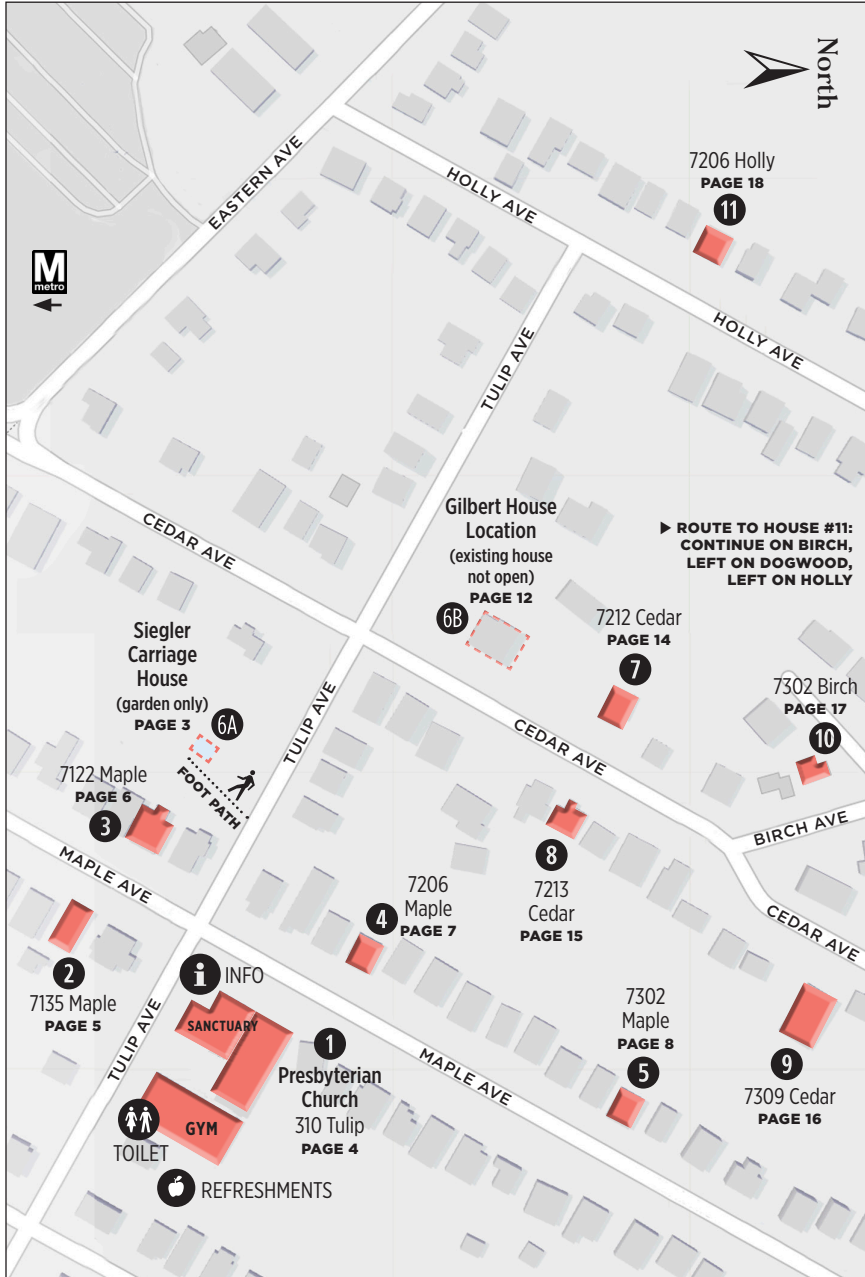
Call us at 301-881-8550 or visit [BARTLETT.COM](http://BARTLETT.COM)

Chris Larkin - Arborist Representative

# Politics & Prayer

46th ANNUAL

Takoma Park House and Garden Tour



**CROWN POINT**  
CABINETS

Custom cabinetry  
for every room in  
your home

Work with one  
of our in-house  
design professionals

Handcrafted in New Hampshire

Available direct, nationwide

800-999-4994

[www.crown-point.com](http://www.crown-point.com)

**6A: Siegler Carriage House**

BUILT c. 1884

Amanda and Isaac Thomas

PHOTO & WRITE UP ON PAGE 3  
Garden open only

**6B: 7204 Cedar Avenue**

(FORMERLY 204 OAK AVENUE)  
BUILT DURING 1884-1885

Maggie and Benjamin F. Gilbert

No entry to property



The Gilbert mansion

ENVISION THE GRAND MANSION of Takoma Park founder Benjamin Franklin and Maggie Gilbert once located here. It was an elaborate example of Stick style architecture with decorative “stickwork” facing in grid and diagonal patterns. A style popular with people of standing and wealth, the house cost over \$20,000 to build. Gilbert’s orchard provided 25 varieties of apples. By 1890, a new vitrified tile sidewalk existed, still present today. The home hosted early town council meetings.

On May 2, 1892, Gilbert was re-elected with only 19 votes cast and no opposing ticket. By now he was personally financing the building of the 160-room North Takoma Hotel, then outside the city limits. Strapped for funds, he

prepared to sell his home and move to the hotel, which meant he could no longer serve as mayor.

In a prearranged maneuver, newly elected Councilmember Lung resigned on June 21, and the council elected Enoch Maris, a real estate developer and Gilbert associate, to fill his vacancy. When Gilbert then resigned on June 28, the Council elected Councilmember Maris to serve out Gilbert’s term.

Gilbert sold his house to Samuel Shedd the day after resigning as mayor. Shedd became mayor in 1894, surviving a challenge from Maris (50/28). Shedd sold the house to Theodore Culley in 1905, under whose ownership it burned down in 1913. The existing 1918 Colonial Revival house is partially on the mansion’s stone foundation. ♦

**Ellen & Art McMurdie**

Special Thanks from  
Historic Takoma for Your Support



**Thanks to Historic Takoma for the House and Garden Tour that's a great asset to the community.**

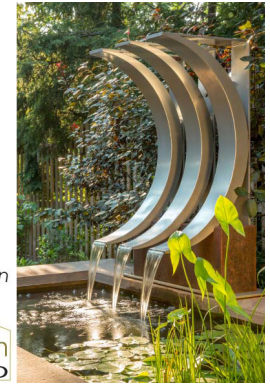


**David Maplesden**  
REALTOR

**The Maplesden Group**  
David Maplesden & Elliot Barber

EMAIL: INFO@MAPLESDENGROUP.COM  
WEB: WWW.MAPLESDENGROUP.COM

OFFICE: 301-270-7026  
CELL: 202-270-7253



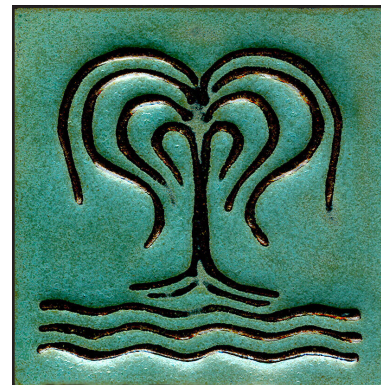
Working at the intersection of Art, Architecture & Design

301-891-3800  
www.BraitmanDesign.com



**Sligo Creek Tile Co.**

Lynn & John Hume  
7422 Carroll Ave.  
Takoma Park, MD 20912  
(301) 270-5635  
hume@sligocreek.com  
sligocreek.com







**7212 Cedar Ave.**  
BUILT 1888

*First floor, garden*

*Exit rear*

*Wear booties*



**T**HIS COLORFUL QUEEN ANNE style house was built by retired physician William Swander, whose next-door neighbor at the corner of Cedar and Tulip was town founder B.F. Gilbert. A vitrified tile sidewalk exists along the street in front of this house, installed in 1890. The house is an outstanding resource in the Takoma Park Historic District. Kelly and Marcos purchased the property in 2013; it was last on the Tour in 1998.

Original front double-doors with elaborate wood-working signal this house is special. The interior is all about historic fabric and design. Rooms are spacious and separated with two sets of tall, paneled pocket doors. The bright rear addition was added in 1988.

Notice ceiling medallions, corner protectors and elaborately beaded trim on windows, doorways and tall baseboards. The National Radiator Company in Johnstown PA manufactured the decorative radiators in 1902. The fireplace mantelpiece, insert and tiles are believed to be original.

A rarely encountered element is the poppy design on doorway and window trim corner blocks. The poppy was one of the design icons (with the sunflower) popularized by the Aesthetic Movement, an art reform movement in full bloom here in the 1880s. In addition to the Queen Anne style itself, Aesthetic Movement designs are on fireplace tiles, pocket door hardware and doorbell cover. ♦



**7213 Cedar Ave.**  
BUILT c. 1923

*First and second floors, garden*

*Exit rear*



**T**APERED BRICK PORCH PIERS, large roof brackets, small pane windows, shingle siding, “rock face” block foundation, and earth colors all combine to make this a beautiful example of an early 1920s Craftsman bungalow built by Clarence and Maude Lawry. Catherine and James purchased it in 2010; this is its first time on the Tour.

**Architect Dana Haden of Studio D**, with her unique mastery of space and design, teamed with renovation expert **David Hoskins of The Right Angle** (ad page 14) to design and build a major renovation in 2011-12. On the first floor, Dana and Dave created an expanded family room and kitchen space, keeping as much original material as possible, replicating where

needed. Catherine carefully planned kitchen cabinetry and appliance layout to fit her use and selected cherry cabinets with soapstone counters. The owners remodeled first floor bathrooms to fit the style and added geothermal heating and cooling.

Dana and Dave improved access to the upstairs with a new staircase illuminated by a skylight, and cleverly converted the old attic space into a generous area with two bedrooms, washer/drier, and bathroom with skylight. They also added a second-floor dormer for a master bedroom, walk-in closet, and bathroom with a walk-in shower.

Outside, Dana re-designed the garage, adding its attached screened porch. Enjoy the mini-farm with its gregarious chickens! ♦



# THE RIGHT ANGLE

RENOVATIONS & ADDITIONS

**David Hoskins**

The Right Angle, LLC  
10026 Clue Drive | Bethesda, MD 20817  
Office (301) 564-1915 | Cell (301) 602-7174  
rightangle@verizon.net

**Studio d**  
Architecture and Design  
Dana Haden, AIA  
805 Sligo Creek Parkway • Takoma Park, MD 20912  
301.237.8537 • danahaden@gmail.com



### 7309 Cedar Ave.

BUILT c. 1890-1892

First and second floors

👉 Exit front

👉 Wear booties



RECENTLY PURCHASED IN 2017, this is the first time the house has been on the Tour. An on-going labor of love for the owner, she is bringing back missing detail lost from previous remodeling.

This lovely house, located at the edge of Gilbert's first acquisition, may have existed before 1890 when Emma Spencer purchased the property from B.F. Gilbert for approximately \$3000, an amount that signals it was possibly "improved." In the early 1890s, Gilbert was selling off improved property in Takoma Park to cover his investments. Emma's husband Guilford Lawson Spencer worked in the Department of Agriculture as one of the most eminent sugar engineers in the world.

He served on the town council from 1894 to 1896.

The Shingle style of architecture combined a less ornate and highly shingled "old English" Queen Anne style exterior (in contrast to the Aesthetic Movement, House #7) with interior Colonial Revival design. Inside, Colonial Revival design is found on remaining window and doorway trim, doors, half circle brick fireplaces and a mantel with delicate dentil trim. Recent restoration efforts include refinishing heart pine floors and installing two sets of Colonial Revival style pocket doors found at **Community Forklift**. Visit their in-house exhibit today and support their efforts to save and recycle historic fabric! ♦



## COMMUNITY FORKLIFT

CommunityForklift.org / 301-985-5180

### VINTAGE and MODERN

building materials, appliances, lumber, furnishings, & more

### DONATE or SHOP

Create green jobs & help neighbors in need. Schedule a pickup today!



### 7302 Birch Ave.

BUILT 1940-1941

First floor and lower level, garden

👉 Exit downstairs



THIS SWEET COTTAGE IS ONE of the earliest of eleven houses in a subdivision built by John K. Williams between 1940 to 1950. It created the neighborhoods on Barclay Avenue and Birch to Dogwood Avenues. Nestled into the side of a hill, the cottage exterior of brick, stone, and slate connects to surrounding nature. A round window on the front gable and octagonal window on the front entryway are charming details. The colorful flagstone walkway leads to a welcoming front door. Spence has lived here since 1992, joined now with his wife Trish. This is its first time on the Tour.

Inside, cozy rooms and warm colors make you feel at home. The

focal point is a beautiful new dining and kitchen area designed by **Bill Hutchins of Helicon Works Architects**. The owners worked with different woods and tonalities. Sustainable red birch cabinets are found throughout, and a dramatic slab of walnut is a kitchen bar. Windows here have a treehouse view. Notice the artistic design of the recirculating carbon filter over the stove. The spacious master bedroom was created by Bill opening attic space.

Downstairs is a sitting room with flagstone floor, brick arches above windows and doors, and a stone fireplace. Exit to the garden area and wide paths to the street. Don't miss the original garage door with its slate roof. ♦

ecological homes for green living

t. 301.404.5578  
bill@heliconworks.com

www.heliconworksarchitects.com

**7206 Holly Ave.**  
BUILT 1887

*First and second floors*

 *Exit front*

 *Wear booties*



**T**HIS FOLK VICTORIAN WAS THE home of Reverend Chauncey H. Remington. He is most known in our history for having established “The Peoples’ Ticket” with which he ran for Mayor against the most powerful man in town, founder B.F. Gilbert, in our first 1890 election (see Introduction, page 1).

Its architecture is simple, notable for its “double decker” front porches. A pen and ink sketch of it was featured in Gilbert’s 1888 advertising materials. An outstanding resource in our historic district, this is its first time on the Tour. The owners found their lovely house in 2017.

A new stone walkway leads to the front porch. The interior has the feeling of a well preserved, historic house.

Large original windows and heart pine floors grace generous rooms with high ceilings sporting medallions. Two sets of paneled pocket doors separate rooms with detailed trim. A slate mantelpiece connects to the Aesthetic Movement with fan and flower designs. Interior furnishings are a spontaneous blend of European and American pieces with clean lines. A modern kitchen in the 1980s rear addition has tall double doors salvaged from a former jazz and blues club in Dupont Circle.

A staircase with three turnings and balusters with detailed geometric design leads upstairs. **Heritage Building and Renovation** installed the bathroom in the master bedroom addition in 2018; **Architect Paul Treseder** (ad page 19) designed it. ♦

**BENNETT FRANK McCARTHY**  
*architects, inc.*

(301) 585-2222 • www.bfmarch.com • (301) 585-8917 fax



**Access-Ability  
Consultants**

Special Thanks from  
Historic Takoma for Your Support



**Heritage Building  
and Renovation, Inc.**

Specializing in the complexities of older homes

**Design/Build • Historic Renovation • Additions  
Kitchens and Bathrooms • Family Rooms  
Built in Cabinetry • Porches and Decks • Structural Repairs**

301-270-4799 HeritageBR.com

*Fine Craftsmanship  
Attention to Detail  
Timely Completion*

MHIC Lic. #32422

**Paul Treseder**  
Architect AIA

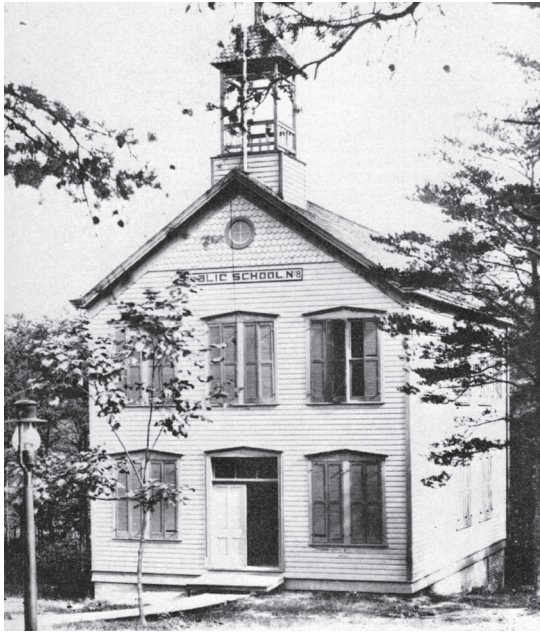
6320 Wiscasset Road  
Bethesda, MD 20816

301-320-1580 • Fax- 301-320-1581

Paul.Treseder@verizon.net



## TAKOMA PARK'S First Public Schoolhouse



**1887:** School site purchased from founder B.F. Gilbert for \$740 with County Board of Education funds. Construction begins.

**1888:** Schoolhouse is completed, costing \$876 to build. Classes begin in September with 29 pupils and one teacher, who was paid \$300 per year.

**1890:** Rapid Takoma Park growth causes enrollment to grow to 96. An assistant teacher was hired.

**1923:** Schoolhouse closes and was later converted to apartments.

**1962:** Schoolhouse is replaced with church gymnasium (Fellowship Hall) where refreshments are today.

MOMI's tenants at  
**ELEVATION 314**  
and **ELM GARDENS**  
celebrate Historic Takoma's  
2018 Takoma Park  
House and Garden Tour!

Elevation 314, 314 Carroll Ave NW  
Elm Gardens, 7050 Eastern Ave NW • Washington, DC  
MOMI • 301-622-7980 • momi@momidc.com

# MOMI

Environmentally and socially  
conscious properties

Montgomery Oaks Management  
Inc. continually strives to make our  
properties healthy, beautiful and  
comfortable; and to provide the  
occupants with a level of service  
that is personal and exceptional.



Historic Takoma thanks the homeowners  
who so graciously opened their homes and gardens for  
the 2019 Takoma Park House and Garden Tour.

We also thank the following for their donated time and services:

Lorraine Pearsall, Chair; Marty Ittner; Diana Kohn; Art McMurdie; Dick O'Connor; Jim Douglas;  
Pierre Perrolle; Ace Hardware, Sligo Creek Tile Co., TableTop, Takoma Park Silver Spring Co-Op;  
Takoma Radio; TPSS Community Kitchen; Our 50 Tour Docents.

PHOTOGRAPHY: Art McMurdie  
PROGRAM DESIGN: Marty Ittner

PRINTING: DigiPrint Connection  
AWARDS: Sligo Creek Tile Co.

Historic Takoma wishes to thank the following  
community-friendly institutions, businesses and  
individuals for their support of the  
2019 Takoma Park House and Garden Tour:

### SPONSORS

Access-Ability Consultants • Allied Window, Inc. • City of Takoma Park • Crown Point Cabinetry •  
Judy Kogod of Long & Foster Real Estate • Art and Ellen McMurdie • Takoma Park Silver Spring Co-op  
• Tenants of Montgomery Oaks Management

### DONORS

J. Allen Design/Build • Catarina Banner and Marcie Sandalow of Compass • Braitman Design Studio •  
Bartlett Tree Experts • Bennett Frank McCarthy • Community Forklift • Durasupreme Cabinetry • Dana  
Haden Studio d • Helicon Works Architects • Heritage Building and Renovation, Inc. • David Maples-  
den of Long & Foster Real Estate • Ben Norkin Architecture • Lorraine Pearsall and Paul Chrostowski •  
Quality Kitchens & More, Inc. • The Right Angle • Sligo Creek Tile Co. • Elizabeth Thornhill • Tillerman  
Gardens • Paul Treseder, AIA • Bruce Werber of Long & Foster Real Estate

### CONTRIBUTORS

Ashley Flory • Sara Hayden and Ray Martone • Susan Schreiber • Faith Wheeler

ALL PROCEEDS FROM THE TOUR ARE REINVESTED IN OUR COMMUNITY.



HISTORIC TAKOMA  
7328 Carroll Ave., Takoma Park, MD 20912  
historictakoma.org



# TPSS CO-OP

*your neighborhood natural foods store*



*weekly produce deals  
local, organic & bulk foods  
natural health & beauty  
beer & wine*

*community-owned  
democratically-controlled  
member-owner discounts*



**OPEN 8AM-10PM EVERYDAY**  
**201 ETHAN ALLEN AVE**  
**TAKOMA PARK, MD**  
**301.891.2667**  
**TPSS.COOP**



## Thursdays @ The Co-op

Eat. Connect. Enjoy.

5:30 - 7:30 | March 28 - September 26

Local Food | Live Entertainment | Beer, Wine, & Food Tastings | Community Group Pop-Ups